

PINNACLE RQ®



Pinnacle RQ®

Homogeneous: Non-Directional - Phthalate Free

Attractive, Distinctive And Eye-Catching

Pinnacle RQ® presents a fascinating palette of **35 colours** that will lighten up your environment. This contemporary pallet is designed to be beautiful in a multitude of interiors. With zero VOC, zero maintenance and easy installation, Pinnacle RQ® is the first choice for leading architects, consultants and designers.



Special Features



CERTIFIED BY
SCS Global Services



Applications

- Hospitals
- Clinics
- Laboratories
- Airports
- Old Age Homes
- Schools
- Offices
- Auditoriums
- Supermarkets / Malls
- Kindergartens
- Colleges
- Dormitories

Product Description

Pinnacle RQ® is a Phthalate free, fully flexible homogeneous, non-directional floor covering with a modern design incorporated throughout the entire 2.00 mm thickness of the product. Available in sheets and tiles, the surface is densely treated for superior wear resistance and reduced maintenance.

Pinnacle RQ® is treated with RQ Protect process providing a high level of durability and acting as a barrier against stains and chemical aggression. RQ Protect completely replaces the application of wax or polish during the lifetime of the product.

Pinnacle RQ® is anti-fungal and anti-bacterial. The flooring complies with the EN 649 (34 / 43) and has a group T wear rating. It is suitable for heavy traffic areas.

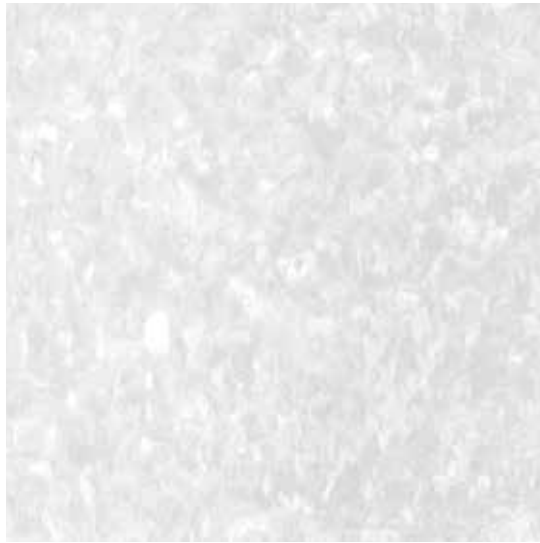
Pinnacle RQ® has Zero VOC emissions and is an environmentally advanced floor covering with superior chemistry and unparalleled performance. VOC ($\leq 1/2$ Chronic REL) formaldehyde compliant ($\leq 9.0 \mu\text{g}/\text{m}^3$) according to the CDPH/ EHLB/ Standard, Method V1.1-2010 (certificate 120316-01).

Technical Specifications

For complete Technical testing information refer to PAGE 78 and 79.

Pinnacle RQ®

Homogeneous: Non-Directional - Phthalate Free



PN - 02

Crystal Grey



PN - 01

Silver Grey



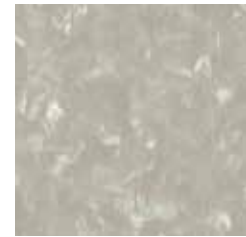
PN - 33

Inspired Lilac



PN - 13

Silver Sand



PN - 14

Eagle Rock



PN - 31

Snow Cloud



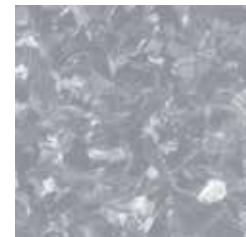
PN - 04

Concrete Grey



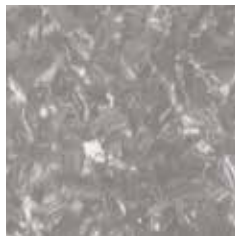
PN - 03

Metal Grey



PN - 05

Smoke Grey



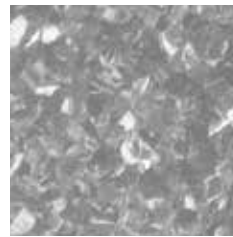
PN - 15

Smoked Truffle



PN - 12

Dark Coffee



PN - 06

Lava Stone



PN - 09

Solid Grey



PN - 07

Castle Rock



PN - 08

Lead Grey

Pinnacle RQ®

Homogeneous: Non-Directional - Phthalate Free



Light Peach

PN - 16



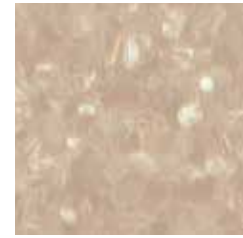
Tan Beige

PN - 10



Camel Beige

PN - 11



Copper Metal

PN - 17



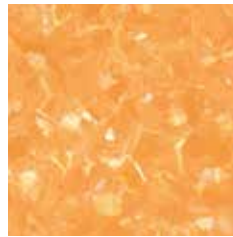
Dull Moon

PN - 25



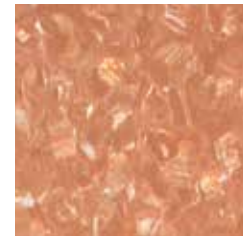
Fossil Coral

PN - 24



Apricot Orange

PN - 21



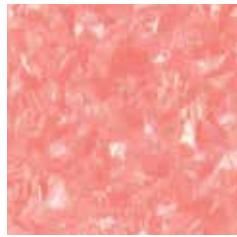
Copper Brown

PN - 26



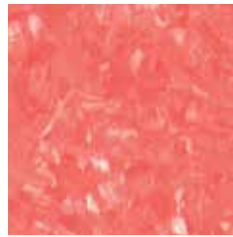
Setting Sun

PN - 20



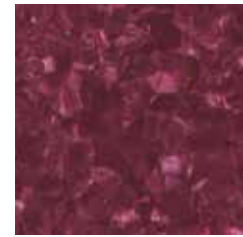
Fresh Salmon

PN - 22



Dark Coral

PN - 23



Fuchsia Granite

PN - 18



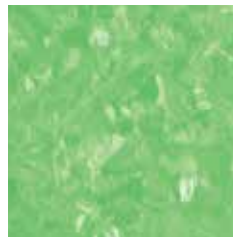
Citra Lime

PN - 27



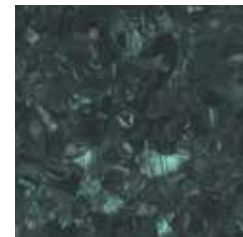
Olive Green

PN - 28



Fern Green

PN - 29



Blue Granite

PN - 36



Iced Blue

PN - 30



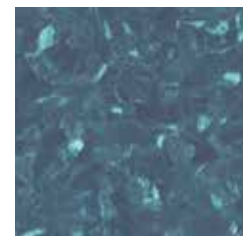
Aqua

PN - 32



Crushed Heather

PN - 34



Blue Berry

PN - 35

Matching welding rods are available for every colour.
Printed shades may appear slightly different from actual samples.

HOMOGENEOUS

Phthalate Free

Characteristics	Standards	Units	Pinnacle RQ®
Phthalate Free			Yes
Indoor Air Quality	CA Section 01350 (≤ 0.5 mg / m ³)	Floorscore Certified (SCS - FS - 04547)	Yes
	ISO 16000-6, TVOC after 28 days	µg/m ³	< 10 (Fully compliant)
Description			
Type of floor covering	ISO 10581	Type 1 - Binder Content	Homogeneous vinyl flooring (Non - directional)
General performance	ISO 10874 - EN 685	Classification	34: Very Heavy Commercial 43: Heavy Light Industrial
Usage / Wear Resistance	BS EN 649	Group T	Heavy foot traffic / Heavy duty
Special treatment			RQ Protect : no wax no polish for life
Overall thickness	ISO 24346 - EN 428	mm	2.00
Thickness of wear layer	ISO 24340 - EN 429, ASTM F410	mm	2.00
Weight	ISO 23997 - EN 430	g/m ²	2850
Sheet size	ISO 24341 - EN 426	m (width)	2
		m (length)	15
		m ² (surface area)	30
Tile Size	ISO 24342	cm x cm (length x width)	30 x 30cm 50 x 50cm 61 x 61cm
Abrasion resistance	EN 660 - 2	Group	T
	EN 660 -2	Volume loss mm ³	< 2
	ASTM D3389 (weight loss / 1000 cycles)	g	< 0.40
Castor chair test	ISO 4918 - EN 425	Type of use	Continuous
Slip resistance	DIN 51130	Ramp Test	R 10
	EN 13893 ASTM D2047	Coefficient of friction	DS (> 0.30) Pass (0.70 avg)
Dimensional stability	ISO 23999 - EN 434	%	≤ 0.40
Flexibility	ISO 24344 - EN 435	20mm mandrel	No Cracking
	ASTM F137		Pass
Seam Strength	ISO 16906	N/50mm	Pass
Residual indentation	ISO 24343 - 1 - EN 433	mm	≤ 0.10
	ASTM F970	psi	800
	ASTM F1914	inches	Avg. 0.001
Colour fastness to light	EN ISO 105 - B02	Degrees	≥ 6
	ASTM F1515	ΔE ≤ 800 after 300 hours (colour change)	Pass
Static electrical propensity	EN 1815	kV	< 2.0
Thermal resistance	EN 12667	m ² k/W	Approx 0.01m ² k/W (suitable at 27°C)
Heat Stability	ASTM 1514	ΔE ≤ 0.80 (colour change)	Pass
Reaction to fire	EN ISO 9239-1	kW/m ²	≥ 8
	EN ISO 11925-2		Pass
	EN 13501-1 : 2007+A1	Class	Bfl - S1
	ASTM E 648	Type	1
Smoke density	ASTM E 662	Dm	< 450 (Pass)
Stain & chemical resistance	ISO 26987 - EN 423	Index	0 (Excellent resistance)
	ASTM F925	Resistance	Pass
Fungi & bacteria resistance	ISO 846 A, C		Does not favour growth
Maritime usage	IMO RES A 653 (16)		Annex 1 Part 2 (Smoke & Toxicity)
	IMO MSC 61 (67)		Part 5 (Spread of Flame) and Annexure 2
	Marine Equipment Directive		1121 